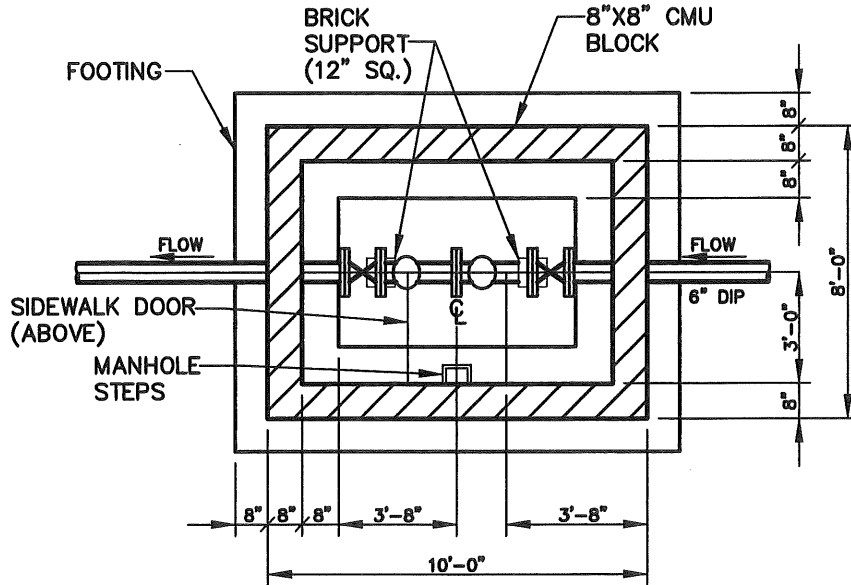
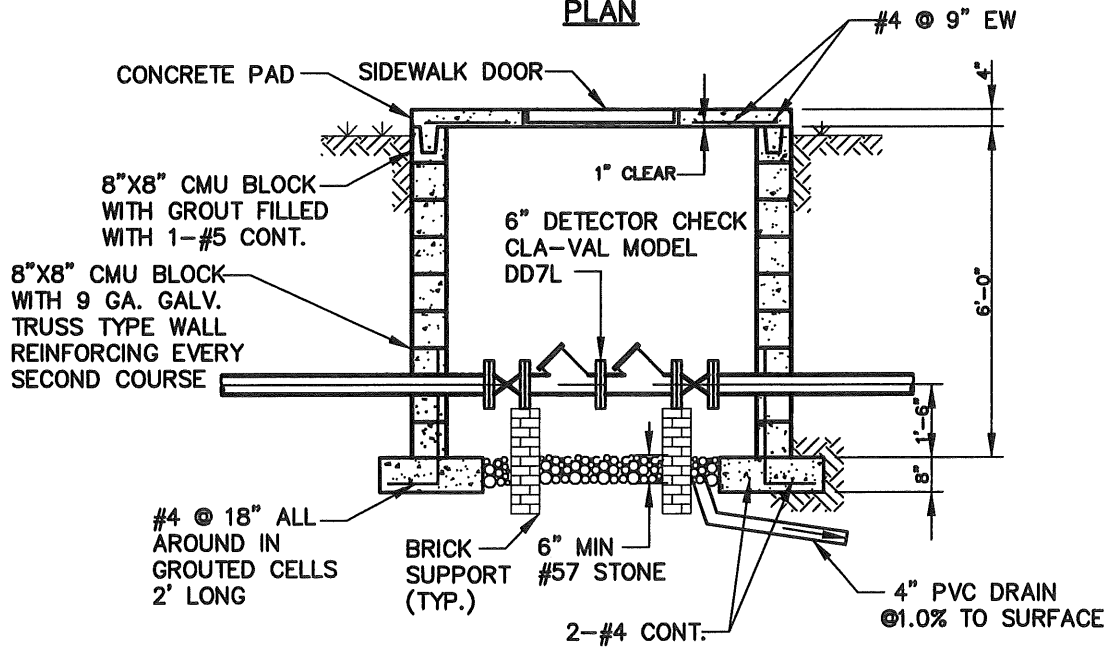


**NOTES**

1. USE ALL FLANGED FITTINGS UNLESS OTHERWISE NOTED.
2. A PRECAST METER PIT MAY BE SUBSTITUTED WITH ENGINEER'S APPROVAL.
3. ALL CONCRETE SHALL BE 3,000 PSI @ 28 DAYS, READY-MIX ASTM C-94.
4. USE BILCO TYPE K-5 SIDEWALK DOOR.
5. USE MANHOLE STEPS, REINFORCED PLASTIC WITH A 3/8" MIN. DIA. STEEL ROD @ 18" O.C.
6. CONSTRUCT BRICK SUPPORTS ON UNDISTURBED SOIL.



**PLAN**



**SECTION**

**6" DETECTOR CHECK PIT**

NTS



LUMPKIN COUNTY WSA  
194 COURTHOUSE HILL  
DAHLONEGA, GA 30533  
TEL. (706) 867-6580

**WATER SYSTEM IMPROVEMENTS  
STANDARD DETAILS**

DRAWN BY: SMS

SCALE: AS SHOWN

DATE: JULY 13, 2019

DWG. NO. 494-03A1-W09