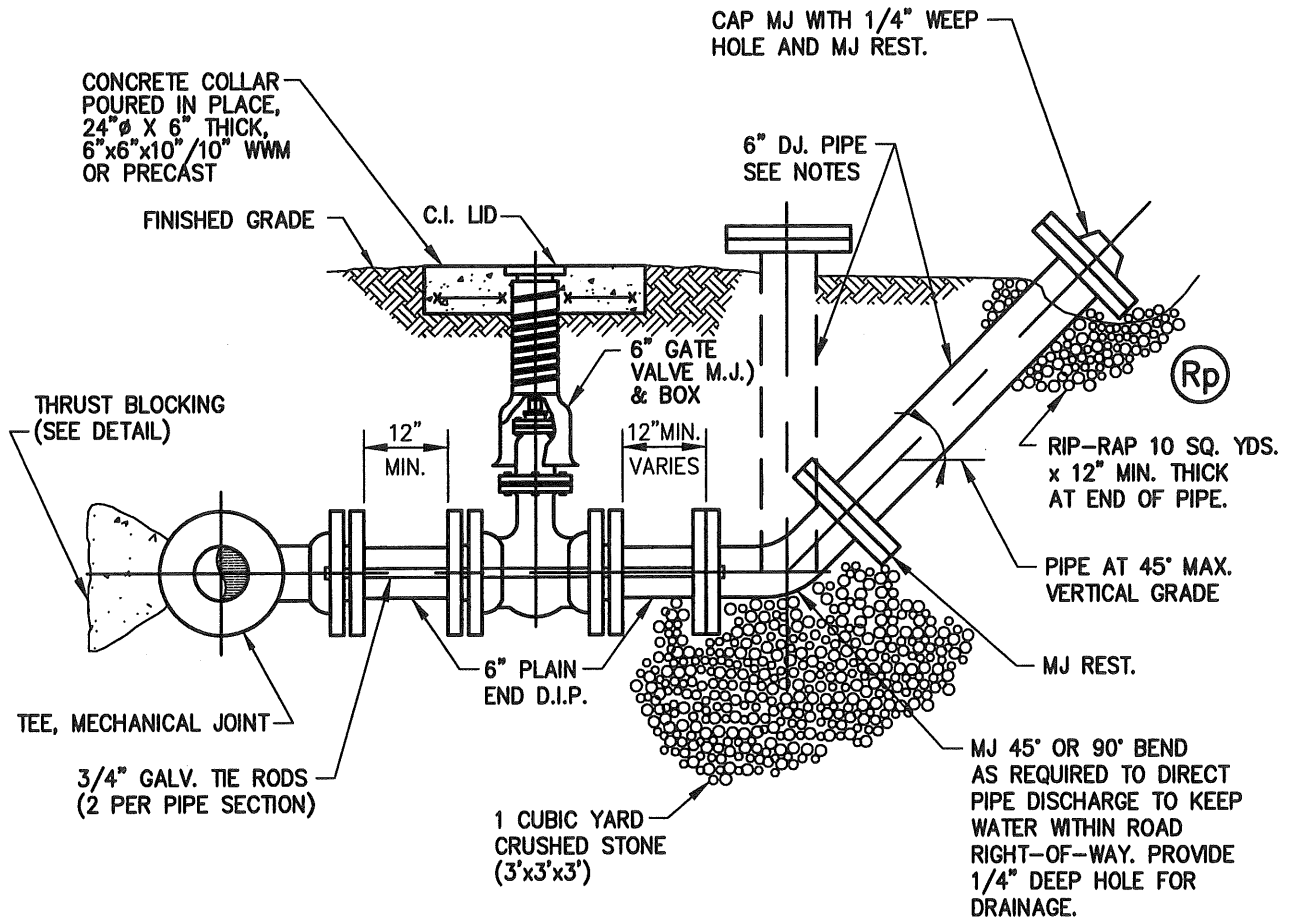


NOTES

1. DIRECTION AND LENGTH OF D.I. PIPE TO BE FIELD COORDINATED.
2. BLOW-OFF VALVE PAY ITEM TO INCLUDE VALVE, VALVE BOX, BEND, CAP, RIP-RAP, AND UP TO 10 LF OF DJ. PIPE.
3. ADDITIONAL FITTINGS AND DJ. PIPE (OVER 10 LF) WILL BE PAID UNDER APPROPRIATE BID ITEM.



6" BLOW-OFF ASSEMBLY

NTS



LUMPKIN COUNTY WSA
194 COURTHOUSE HILL
DAHLONEGA, GA 30533
TEL. (706) 867-6580

**WATER SYSTEM IMPROVEMENTS
STANDARD DETAILS**

DRAWN BY: SMS

SMS

SCALE: AS SHOWN

DATE: JULY 13, 2019

DWG. NO. 494-03A1-W08